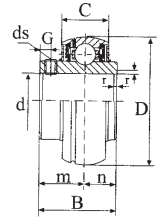
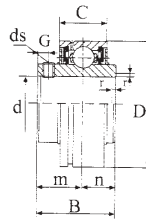


Ball Bearings For Bearing Units With Set Screws

UC 200

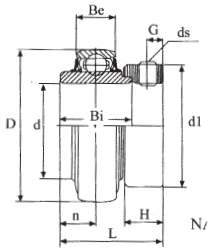
RB 200



Ball Bearings for Bearing Units

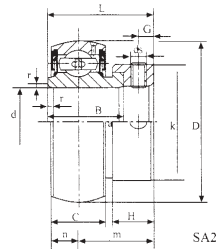
Bearing Number	Shaft Dia. d		Dimensions (mm)							Basic Load Ratings (kN)		Weight kg		
	in	mm	D	B	C	n	m	G	d _s	Cr	Cor			
UC, RB	201	1/2	12	40	27.4	14	11.5	15.9	4.5	1/4-18 UNF M5 x 0.8	9.57	4.79	0.18	
	201-8		0.18											
	201-9		0.17											
	202	9/16	15	0.17										
	202-10	0.17												
	203	11/16	17	0.16										
	203-11		0.15											
	204-12	3/4	20	0.17										
	204	7/8	20	47	31	16	12.7	18.3	5	1/2-28 UNF M6 x 1	12.8	6.65	0.17	
	205-14		0.18											
	205-15		0.21											
	205	15/16	25	52	34.1	17	14.3	19.8	5.5	1/2-28 UNF M6 x 1	14.0	7.88	0.20	
	205-16	0.20												
	206-18	1	1-1/8	30	62	38.1	19	15.9	22.2	6	1/2-28 UNF M6 x 1	19.5	11.5	0.35
	206	0.33												
	206-19	1-3/16	35	72	42.9	20	17.5	25.4	7	5/16-14 UNF M8 x 1	25.5	15.2	0.55	0.33
206-20	0.31													
207-20	1-1/4	0.52												
207-21	1-5/16	40	80	49.2	21	19	30.2	8	5/16-24 UNF M8 x 1	29.55	18.0	0.69	0.49	
207-22	1-7/8												0.49	
207	1-7/8	45	85	49.2	22	19	30.2	8	5/16-24 UNF M8 x 1	31.5	20.5	0.65	0.46	
207-23	1-7/8												0.69	
208-24	1-1/2	50	90	51.6	24	19	32.6	10	3/8-24 UNF M10 x 1.25	35.0	23.2	0.88	0.66	
208-25	1-9/16												0.76	
208	1-9/16												0.84	
UC	209-26	1-5/8	55	100	55.6	25	22.2	33.4	10	3/8-24 UNF M10 x 1.25	43.2	29.2	1.27	0.80
209-27	1-11/16	0.83												
209-28	1-7/4	0.81												
209	1-7/4	60	110	65.1	27	25.4	39.7	10	3/8-24 UNF M10 x 1.25	47.8	32.8	1.54	0.80	
UC	210-30												1-1/8	1.12
210-31	1-13/16												1.10	
UC	211-32	2	65	120	65.1	28	25.4	39.7	10	7/16-20 UNF M12 x 1.25	57.2	40.0	2.00	1.16
211-33	2-3/8	1.12												
211-34	2-3/8	1.12												
UC	211-35	2-3/16	70	125	74.6	30	30.2	44.4	12	7/16-20 UNF M12 x 1.25	60.8	45.0	2.06	1.10
UC	212-36	2-1/4												2.05
212-37	2-3/8	2.05												
UC	212-38	2-3/8	75	130	77.8	32	33.3	44.5	12	7/16-20 UNF M12 x 1.25	66.8	49.5	2.76	1.54
212-39	2-7/16	1.53												
UC	213-40	2-1/2												1.45
UC	213-41	2-1/2	80	140	82.6	33	33.3	49.3	12	7/16-20 UNF M12 x 1.25	71.5	54.2	3.00	1.92
213-42	2-11/16	1.75												
213-43	2-11/16	1.75												
UC	214-44	2-3/4	85	150	85.7	35	34.1	51.6	12	7/16-20 UNF M12 x 1.25	83.5	63.8	3.66	2.06
UC	214-45	2-3/4												2.05
214	2-3/4	2.05												
UC	215-44	2-3/4	90	160	96	38	39.7	56.3	12	7/16-20 UNF M12 x 1.25	95.8	71.5	4.56	2.43
215-46	2-15/16	2.40												
215-47	2-15/16	2.32												
UC	215-48	3	90	160	96	38	39.7	56.3	12	7/16-20 UNF M12 x 1.25	95.8	71.5	4.46	2.40
UC	216	3-1/4												2.80
216-52	3-1/4	2.80												
UC	217-52	3-1/4	90	160	96	38	39.7	56.3	12	7/16-20 UNF M12 x 1.25	95.8	71.5	4.56	3.45
217	3-1/2	3.45												
UC	218-56	3-1/2												4.56
218	3-1/2	4.46												

With Eccentric Locking Collar NA 200



Bearing Number	Shaft Dia. d		Dimensions (mm)										Basic Load Ratings (kN)		Weight kg
	in	mm	D	Be	L	Bi	n	dl	H	G	ds (mm) in	Cr	Cor		
NA 204 204-12	3/4	20	47	17	43.6	34.1	17.1	33.3	13.5	5	M6 x 0.75 1/4-28	9.88	6.65	0.21 0.22	
NA 205 205-14 205-15 205-16	7/8 10/16 1	25	52	17	44.4	34.9	17.5	38.1	13.5	5	M6 x 0.75 1/4-28	10.78	9.93	0.25 0.28 0.27 0.25	
NA 206 206-18 206-19 206-20	1-1/8 1-7/16 1-1/4	30	62	19	48.4	36.5	18.3	44.5	15.9	6	M6 x 0.75 1/4-28	14.97	11.31	0.39 0.41 0.39 0.36	
NA 207 207-20 207-22 207-23	1-1/4 1-3/8 1-7/8	35	72	20	51.2	37.7	18.8	55.0	17.5	6.5	M8 x 1 5/16-24	19.75	15.3	0.60 0.66 0.60 0.57	
NA 208 208-24 208-25	1-1/2 1-7/8	40	80	21	56.4	42.9	21.4	60.3	18.3	6.5	M8 x 1 5/16-24	25.09	19.84	0.77 0.81 0.77	
NA 209 209-26 209-27 209-28	1-5/8 1-11/16 1-3/4	45	85	22	56.4	42.9	21.4	63.5	18.3	6.5	M8 x 1 5/16-24	25.14	20.46	0.84 0.93 0.88 0.84	
NA 210 210-30 210-31	1-7/8 1-15/16	50	90	22	62.7	49.2	24.6	69.9	18.3	6.5	M8 x 1 5/16-24	26.98	23.18	1.02 1.03 1.02	
NA 211 211-32 211-34 211-35	2 2-1/8 2-3/16	55	100	25	71.4	55.5	27.8	76.2	20.7	8.0	M10 x 1.25 3/8-24	33.37	29.22	1.37 1.58 1.41 1.37	
NA 212 212-36 212-39	2-1/4 2-1/16	60	110	27	77.8	61.9	31.0	84.1	22.3	8.0	M10 x 1.25 3/8-24	36.74	32.93	1.85 2.04 1.78	

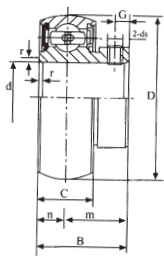
With Eccentric Locking Collar SA 200 (Light-Duty)



Ball Bearings for Bearing Units

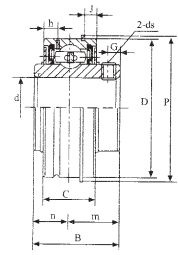
Bearing Number	Shaft Dia. d		Dimensions (mm)										Basic Load Ratings (kN)		Weight kg
	in	mm	D	L	B	C	n	m	K	H	G	d _t	Cr	Cor	
SA 201-8 201-10 201 202 203	1/2 5/8	12 15 17	40	28.6	19.1	12	6.5	12.6	28.6	13.5	4.5	M5 x 0.8	9.57	4.79	0.14 0.13 0.13 0.12 0.10
SA 204-12 204	3/4	20	47	31	21.5	14	7.5	14	32	13.5	4.7	1/4-28 UNF M6 x 1	12.8	6.65	0.15 1.14
SA 205-14 205-15 205-16 205	7/8 15/16 1	25	52	31	21.5	15	7.5	14	38.1	13.5	5	1/4-28 UNF M6 x 1	14.0	7.88	0.20 0.19 0.18 0.18
SA 206-17 206-18 206-19 206-20 206	1-1/16 1-1/8 1-3/16 1-1/4	30	62	35.7	23.8	16	9	14.8	44.4	15.9	6	1/4-28 UNF M6 x 1	19.5	11.5	0.35 0.33 0.31 0.29 0.29
SA 207-20 207-21 207-22 207-23	1-1/4 1-5/16 1-3/8 1-7/16		72	38.9	25.4	17	9.5	15.9	55.6	17.5	7	5/16-14 UNF	25.5	15.2	0.56 0.53 0.51 0.48
SA 208-24 208-25 208	1-1/2 1-9/16	40	80	43.7	30.1	18	11	19.1	60.8	18.3	7	5/16-14 UNF M8 x 1	29.55	18.0	0.68 0.65 0.64
SA 209-26 209-27 209-28 209	1-5/8 1-11/16 1-3/4	45	85	43.7	30.1	19	11	19.1	63.5	18.3	7	5/16-14 UNF M8 x 1	31.5	20.5	0.76 0.73 0.69 0.69
SA 210-30 210-31 210	1-7/8 1-15/16	50	90	43.7	30.1	20	11	19.1	69.8	18.3	7	3/8-24 UNF M10 x 1.25	35.0	23.2	0.83 0.79 0.77
SA 211-32 211-35 211	2 2-3/16	55	100	48.4	32.5	24	12	20.5	76.2	20.6	8	3/8-24 UNF M10 x 1.25	43.2	29.2	0.96 0.87 0.81

With Set Screws SB 200 (Light-Duty)

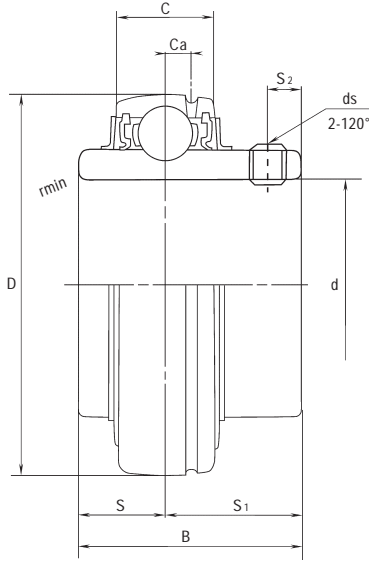


Bearing Number	Shaft Dia. d		Dimensions (mm)							Basic Load Ratings (kN)		Weight kg
	in	mm	D	B	C	n	m	G	d ₁	Cr	Cor	
SB 201-8	1/2											0.09
SB 201-10	5/16											0.08
SB 202		12	40	22	12	6	16	4.5	M5 x 0.8	9.57	4.79	0.08
SB 203		15										0.08
SB 203		17										0.07
SB 204-12	3/4											0.13
SB 204		20	47	24.7	14	7	17.7	4.5	1/4-28 UNF M6 x 1	12.86	6.65	0.12
SB 205-14	7/8											0.18
SB 205-15	15/16											0.17
SB 205-16		1	52	27	15	7.5	19.5	5	1/4-28 UNF M6 x 1	14.0	7.88	0.16
SB 205		25										0.16
SB 206-17	1-1/16											0.28
SB 206-18	1-1/8											0.26
SB 206-19	1-3/16											0.24
SB 206-20	1-1/4											0.23
SB 206		30	62	30.3	16	8	22.3	5	1/4-28 UNF M6 x 1	19.5	11.5	0.23
SB 207-20	1-1/4											0.43
SB 207-21	1-5/16											0.41
SB 207-22	1-3/8											0.38
SB 207-23	1-7/16											0.37
SB 207		35	72	32.9	17	8.5	24.4	6.5	5/16-14 UNF M8 x 1	25.5	15.2	0.37
SB 208-24	1-1/2											0.60
SB 208-25	1-9/16											0.58
SB 208		40	80	34	18	9	25	7.5	5/16-24 UNF M8 x 1	29.55	18.0	0.57
SB 209-26	1-5/8											0.80
SB 209-27	1-11/16											0.78
SB 209-28	1-3/4											0.75
SB 209		45	85	41.2	19	10.2	31	8	5/16-24 UNF M8 x 1	31.5	20.5	0.75
SB 210-30	1-7/8											0.95
SB 210-31	1-15/16											0.90
SB 210		50	90	43.5	20	10.9	32.6	9.2	3/8-24 UNF M10 x 1.25	35.0	23.2	0.85
SB 211-32	2											1.10
SB 211-35	2-3/16											1.00
SB 211		55	100	45.3	21	11.8	33.5	9.8	3/8-24 UNF M10 x 1.25	43.2	29.2	1.00
SB 212-36	2-1/4											1.30
SB 212-39	2-7/16											1.25
SB 212		60	110	53.7	22	14.9	38.8	9.8	3/8-24 UNF M10 x 1.25	47.8	32.8	1.25

Ball Bearings for Bearing Units



Bearing Number	Shaft Dia. d		Dimensions (mm)										Basic Load Ratings (kN)		Weight kg	
	in	mm	D	B	C	n	m	h	J	P	G	d ₁	Cr	Cor		
SER 210-8	1/2															0.26
210-10	5/8		47	30.963	15.873	10.31	20.65	3.8	2.4	52.5	4.5	1/4-28 UNF	12.8	6.65	0.24	
SER 204-12	3/4		47	30.963	15.875	10.31	20.65	3.8	2.4	52.5	4.5	1/4-28 UNF	12.8	6.65	0.22	
SER 205-14	7/8															0.21
205-15	15/16											1/4-28 UNF	14.0	7.88	0.30	
205-16	1		52	34.925	19.05	13.09	21.84	5.2	2.4	57.7	5.0				0.28	
SER 206-17	1/16															0.42
206-18	1-1/8															0.40
206-19	1-3/16		62	38.1	22.2	15.9	22.2	5.56	3.2	67.5	5.0	1/4-28 UNF	19.5	11.5	0.38	
206-20	1-1/4															0.36
SER 207-20	1-1/4															0.62
207-21	1-5/16															0.59
207-22	1-3/8		72	42.9	23.8	17.5	25.4	5.56	3.2	78.2	6	5/16-24 UNF	25.5	15.2	0.56	
207-23	1-7/16															0.53
SER 208-24	1-1/2															0.91
208-25	1-9/16		80	49.2	27.8	19	30.1	6.35	3.2	86.5	8	5/16-24 UNF	29.55	18.0	0.88	
SER 209-26	1-5/8															1.05
209-27	1-11/16											5/16-24 UNF	31.5	20.5	1.00	
209-28	1-3/4		85	49.2	27.8	19	30.1	6.35	3.2	91.3	8				0.97	
SER 210-30	1-7/8															1.10
210-31	1-15/16		90	51.6	28.58	19	32.6	7.54	3.2	96	9	3/8-24 UNF	35.0	23.2	1.05	
SER 211-32	2															1.36
211-34	2-1/8											3/8-24 UNF	43.2	29.2	1.25	
211-35	2-3/8		100	55.6	30.1	22.2	33.4	7.45	3.2	106.3	9				1.19	
SER 212-36	2-1/4															1.82
212-38	2-3/8											3/8-24 UNF	47.8	32.8	1.67	
212-39	2-7/16		110	65.1	31.75	25.4	39.7	7.54	3.20	116.4	10				1.59	



BEARING NO	SHAFT DIA. d		DIMENSIONS (mm)								BASIC LOAD RATING (KN)		WEIGHT (kg)	SPEED (rpm)
	mm	inch	D	C	B	S	S ₁	S ₂	r _{min}	d _s	DYNAMIC	STATIC		
SSUC204	20	3/4"	47	17	31.0	12.7	18.3	4.5	1.0	M6 X 0.75	1000	630	0.275	5800
SSUC204-12														
SSUC205-14		7/8"												
SSUC205-15		1-5/16"	52	17	34.1	14.3	19.8	5.0	1.5	M6 X 0.75	1100	710	0.330	5100
SSUC205	25													
SSUC205-16		1"												
SSUC206-16		1-1/8"												
SSUC206-18			62	19	38.1	15.9	22.2	5.0	1.5	M6 X 0.75	1540	1020	0.515	4300
SSUC206	30													
SSUC207-20		1-3/16"												
SSUC207-21		1-1/2"												
SSUC207-22		1-5/16"												
SSUC207		1-3/8"	72	20	42.9	17.5	25.4	6.0	2.0	M8 X 1	2030	1400	0.675	3700
SSUC207-23		1-7/16"												
SSUC208-24		1-1/2"												
SSUC208-25		1-9/16"												
SSUC208			80	21	49.2	19.0	30.2	8.0	2.0	M8 X 1	2300	1600	0.915	3300
SSUC209-26		1-5/8"												
SSUC209-27		1-11/16"												
SSUC209-28		1-3/4"												
SSUC209			85	22	49.2	19.0	30.2	8.0	2.0	M8 X 1	2560	1810	1.000	2800
SSUC210-30		1-7/8"												
SSUC210-31		1-15/16"												
SSUC210			90	24	51.6	19.0	32.6	10.0	2.0	M10 X 1.25	2750	2020	1.180	2200
SSUC211-32		2"												
SSUC211-34		2-1/8"												
SSUC211			100	25	55.6	22.2	33.4	10.0	2.5	M10 X 1.25	3400	2550	1.470	1700
SSUC211-35		2-3/16"												
SSUC212-36		2-1/4"												
SSUC212			110	27	65.1	25.4	39.7	10.0	2.5	M10 X 1.25	4100	3150	1.980	1200
SSUC212-38		2-3/8"												
SSUC212-39		2-7/16"												



PROPER TIGHTENING TORQUE OF SETSCREWS

TEMPERATURE RANGE

BEARING NO	SET SCREW	TIGHTENING TORQUE Nm
SSUC204~SSUC206	M6x1	3.9
SSUC207~SSUC209	M8x1	8.3
SSUC210~SSUC212	M10x1.25	17.0

MAXIMUM	MINIMUM
+ 60°C	- 15°C

MATERIAL OF OTHER COMPONENTS

BEARING				
Inner & Outer Rings	Ball	Cage	Seal	Set Screw
SUS440C	SUS440C	SUS304	NBR	SUS410C

HOUSING				COVER
MAIN	Sleeve for Bolt	Grease Nipple Nut	Grease Nipple	
VALOX420	SUS304	SUS303	SUS304	VALOX420

PROPER TIGHTENING TORQUE OF HOUSING BOLTS

HOUSING NUMBER	SPP		SPF		SPFL	
	BOLT SIZE	TIGHTENING TORQUE Nm	BOLT SIZE	TIGHTENING TORQUE Nm	BOLT SIZE	TIGHTENING TORQUE Nm
204	M10	17.7	M10	17.7	M10	17.7
205	M10	24.5	M10	24.5	M14	24.5
206	M12	29.4	M10	29.4	M14	29.4
207	M14	34.3	M12	34.3	M14	34.3
208	M14	44.1	M14	44.1	M14	44.1
209	M14	47.8	M14	47.8	M14	47.8
210	M16	51.5	M14	51.5	M16	51.5
211	M16	55.7	M16	55.7	M16	55.7
212	M16	60.2	M16	60.2	M16	60.2

DESTRUCTION STRENGTH OF HOUSING

(Newton)

HOUSING NUMBER	SPP				SPF		SPFL			
	WA	WB	WC	WE	WA	WE	WA	WB	WD	WE
204	16600	5600	7000	3000	14700	340	7400	5600	6600	3300
205	19600	5800	7400	3200	15700	340	7600	8000	8400	3300
206	28300	6000	8600	4000	17600	340	8500	10800	10300	3300
207	38300	6600	10300	5700	18100	350	10700	13800	12200	3400
208	44500	11100	12100	8500	18600	380	15100	17300	14000	3700
209	50000	11800	13800	9600	19600	420	18300	21000	16000	4100
210	54000	12400	15200	10900	21040	530	21000	24600	18500	4800
211	60000	13100	16300	11700	23500	670	25320	29200	21000	5300
212	68000	14000	17400	13400	2700	780	28400	33400	24000	6100